

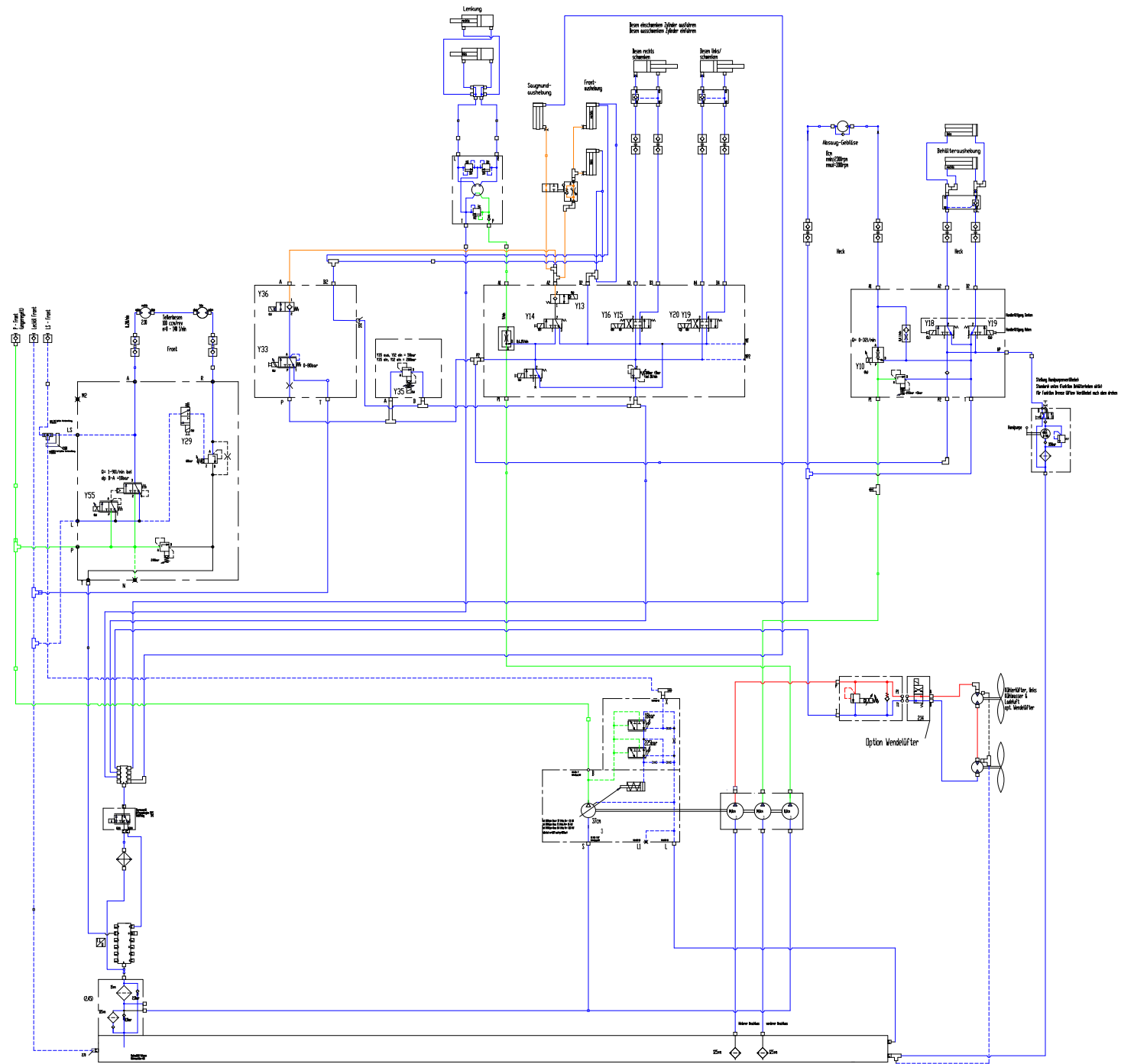
6.0.2 Hydraulic Functional Diagrams Workhydraulic CM 1650

1. Function: Circulation; Work Hydraulic off
2. Function: Raise Front Tool Carrier/ Suction Mouth
3. Function: Raise Front Tool Carrier/ Suction Mouth
4. Function: Side broom R-H, swivel out, Side broom L-H, swivel in
5. Function: Side broom R-H, swivel in, Side broom L-H, swivel in
6. Function: Raise Hopper
7. Function: Lower Hopper
8. Function: Raise Hopper with hand pump
9. Function: Lower Hopper with hand pump
10. Function: Suction Fan on
11. Function: Drive for front attachment with engine off
12. Function: Drive for front attachment in circulation
13. Function: Drive for front attachment aktiv
14. Function: Drive for front attachment in pressure cut-off, pressure over 225bar
15. Function: Fan drive (engine coolant+ hydrauliccoil) on
16. Function: Reversible fan on

6.0.2 Hydraulic Functional Diagrams Workhydraulic CM 1650

1. Function:
Circulation; Work Hydraulic off;
No Solenoid Valve Powered!

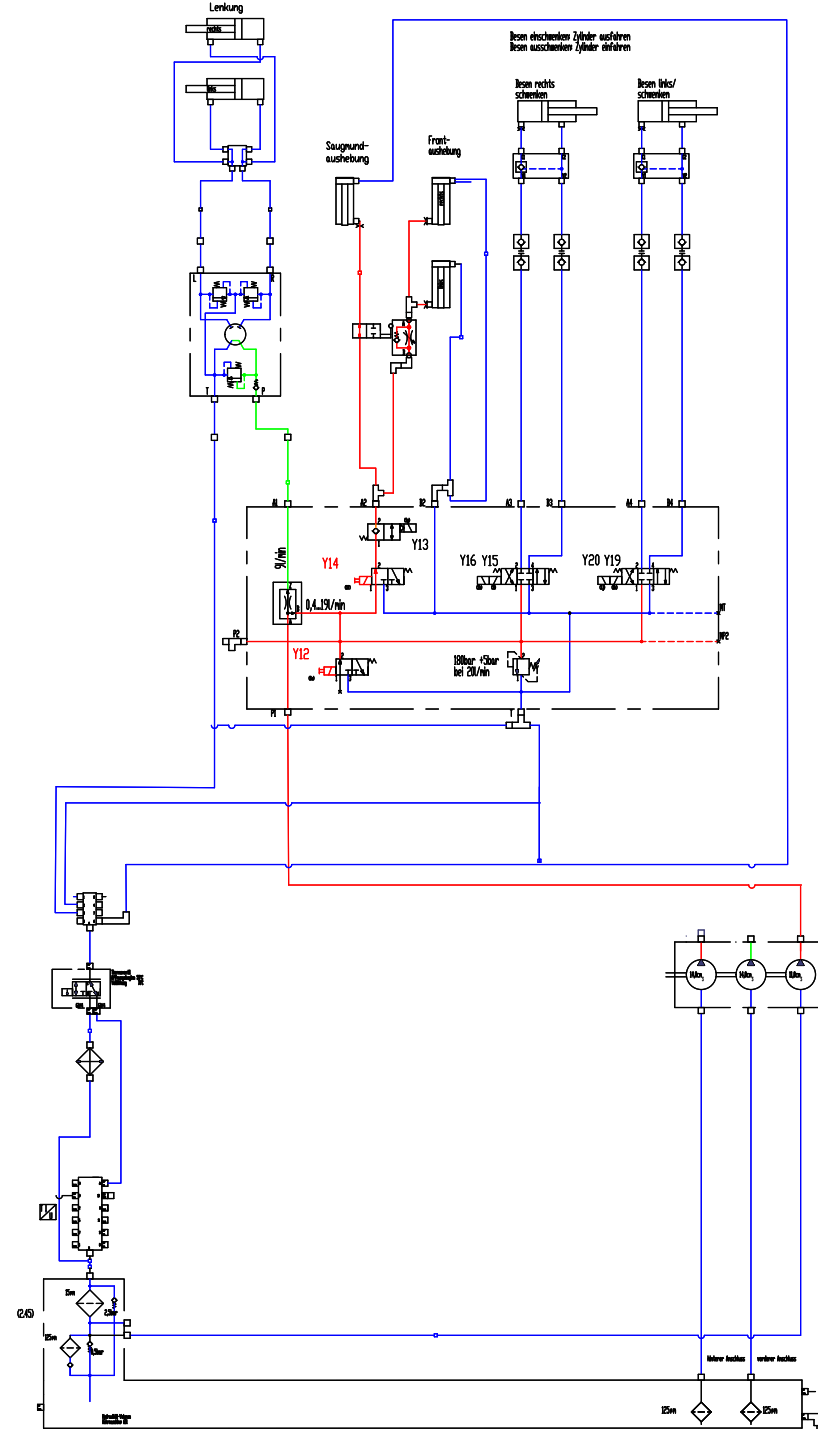
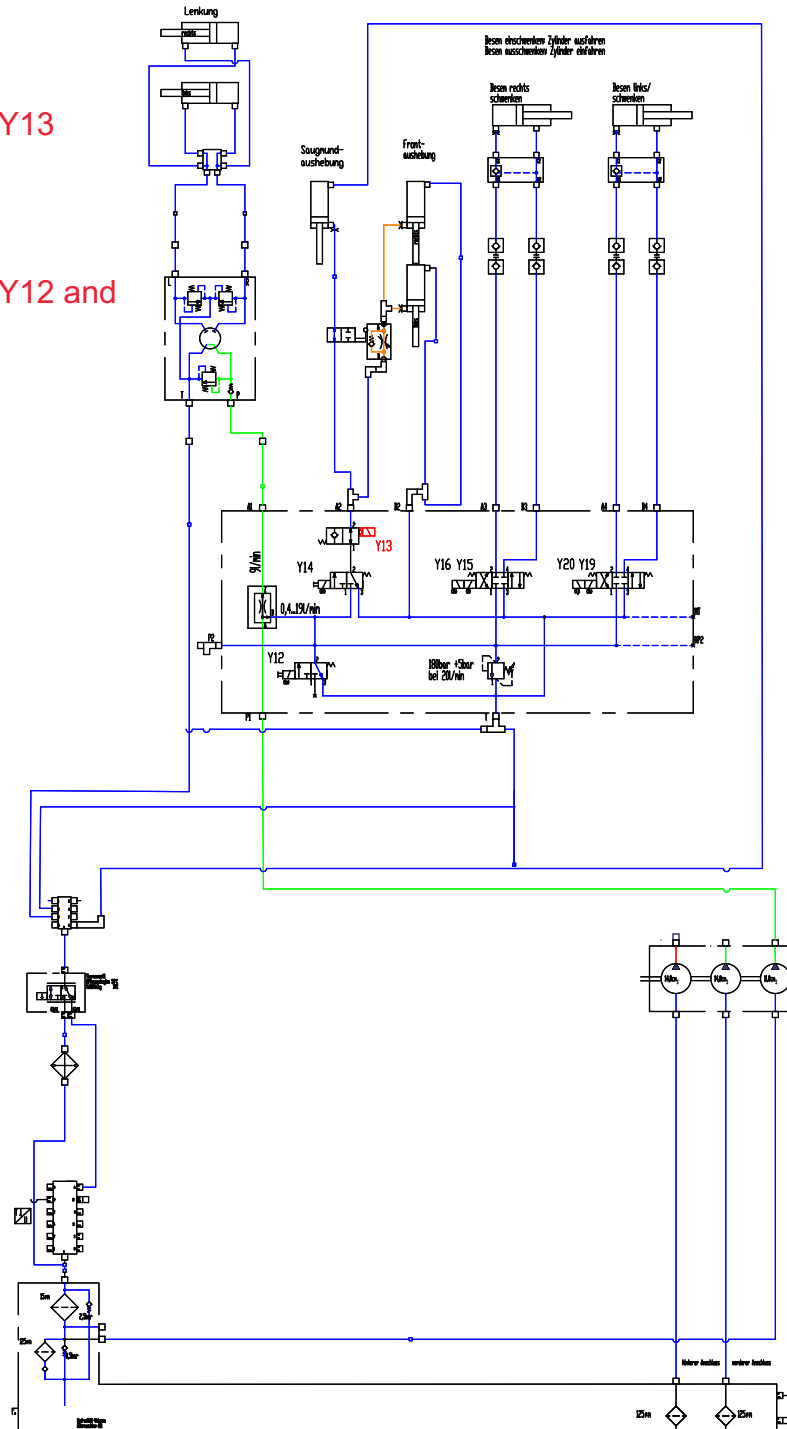
- Hydraulic lines color markings
- Tank pressure
 - Circulation pressure
 - Working pressure
 - Resulting pressure
 - max. pressure



Hy.- Functional diagrams Workhydraulic CM 1650

2. Function:
Raise Front Tool Carrier/ Suction Mouth Y13
powered- on

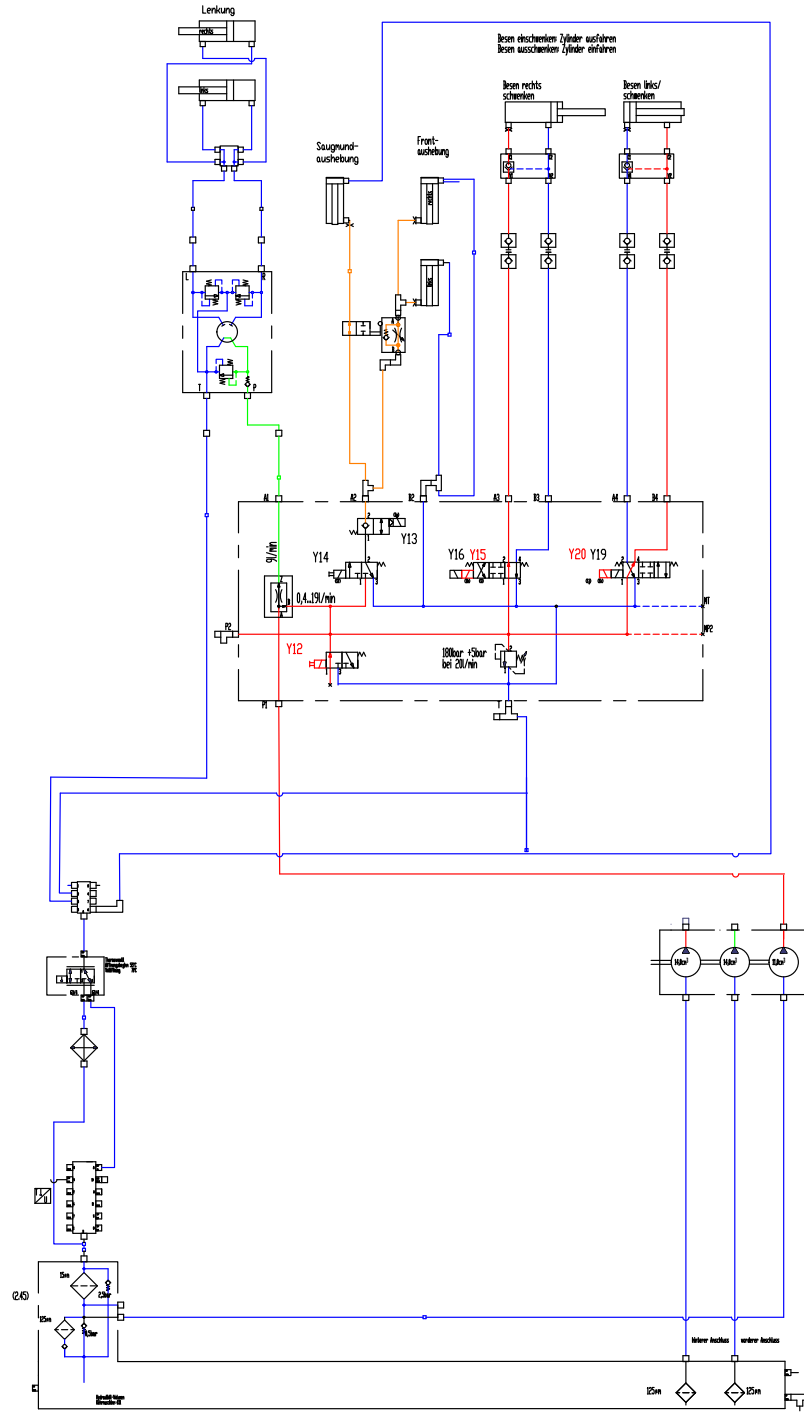
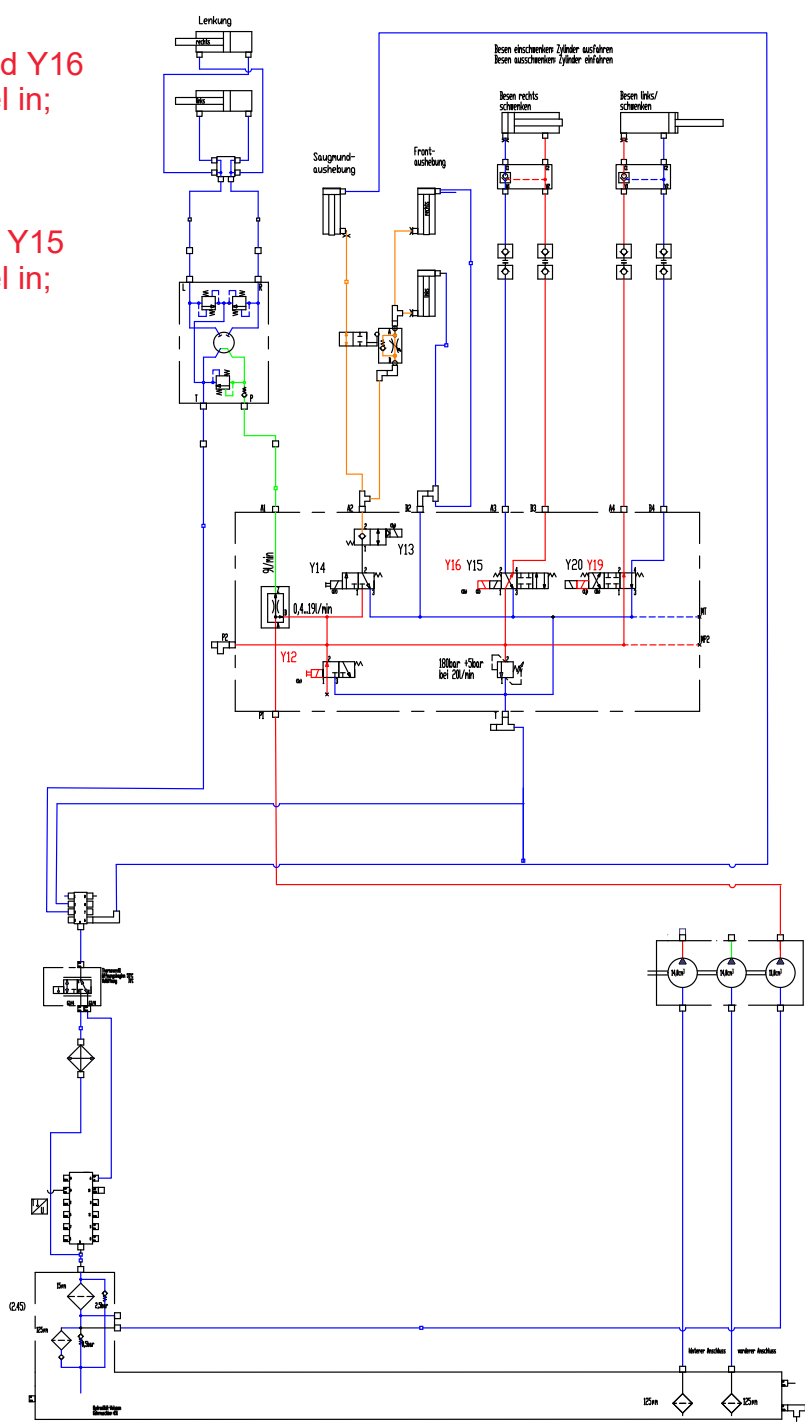
3. Function:
Raise Front Tool Carrier/ Suction Mouth Y12 and Y14 powered- on



Hy.- Functional diagrams Workhydraulic CM 1650

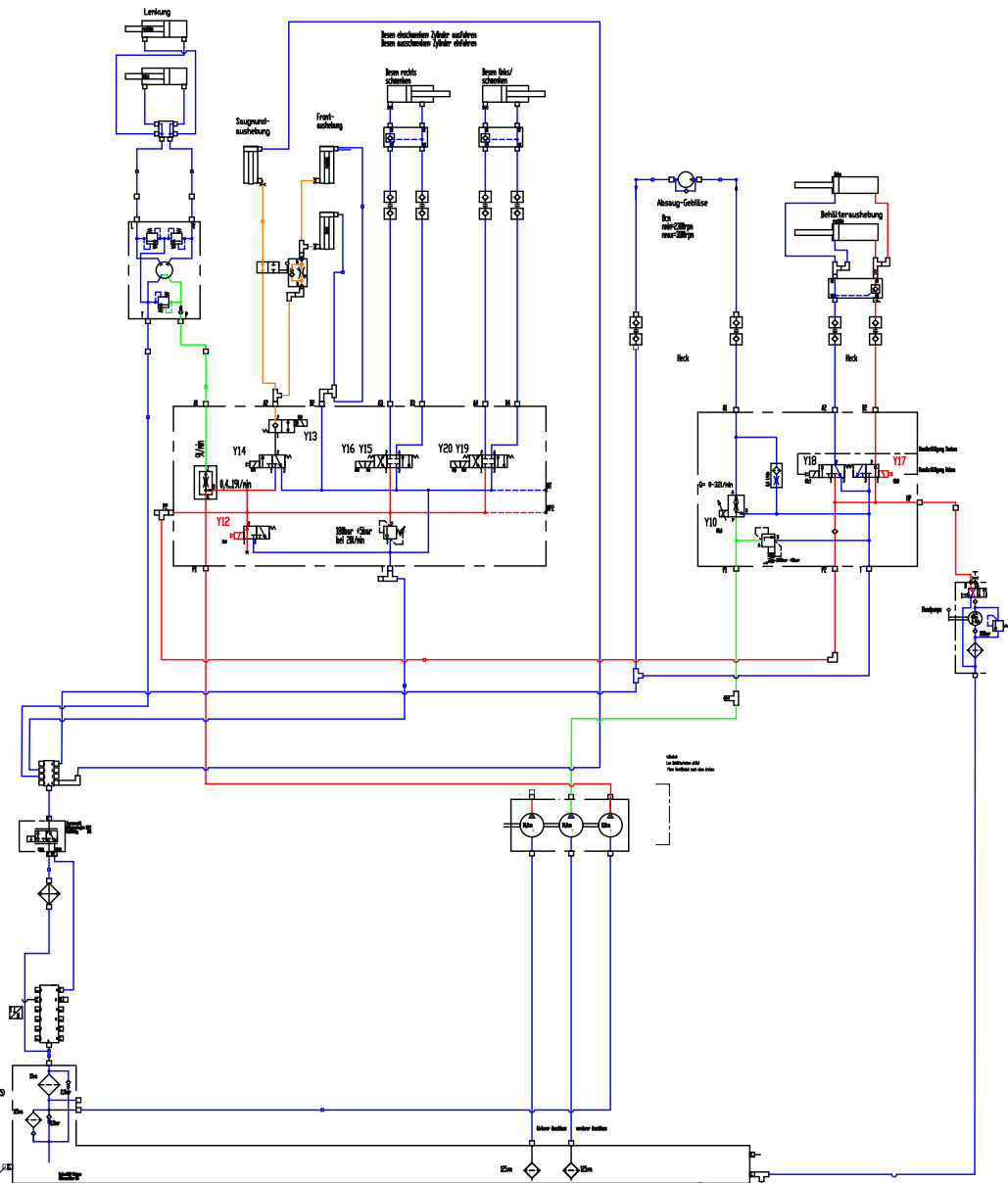
4. Function:
Side broom R-H, swivel out; Y12 and Y16
powered- on Side broom L-H, swivel in;
Y12 and Y19 powered- on

5. Function:
Side broom R-H, swivel in; Y12 and Y15
powered- on Side broom L-H, swivel in;
Y12 and Y20 powered- on

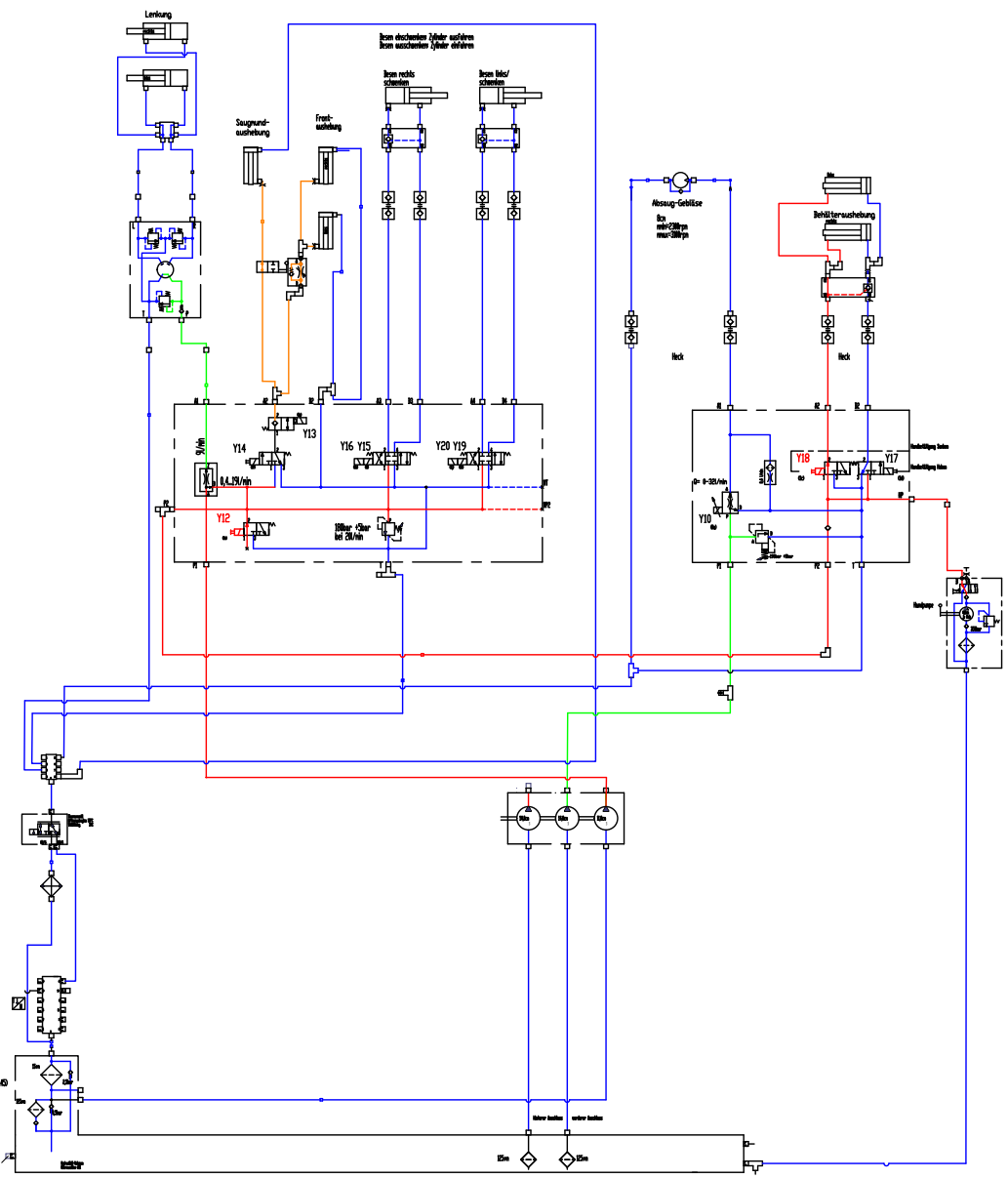


Hy.- Functional diagrams Workhydraulic CM 1650

6.Function: Raise Hopper; Y12 and Y17 powered- on



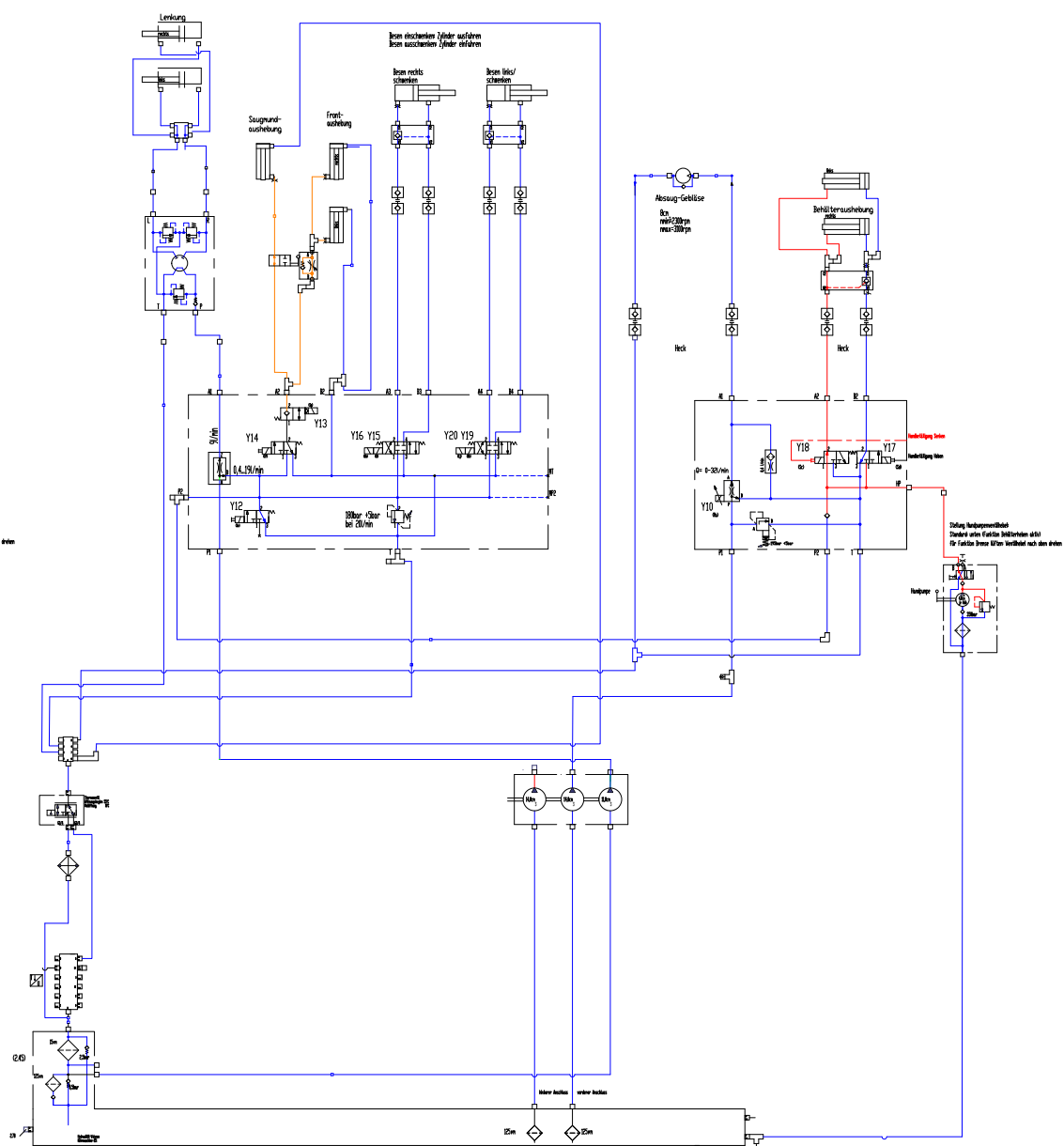
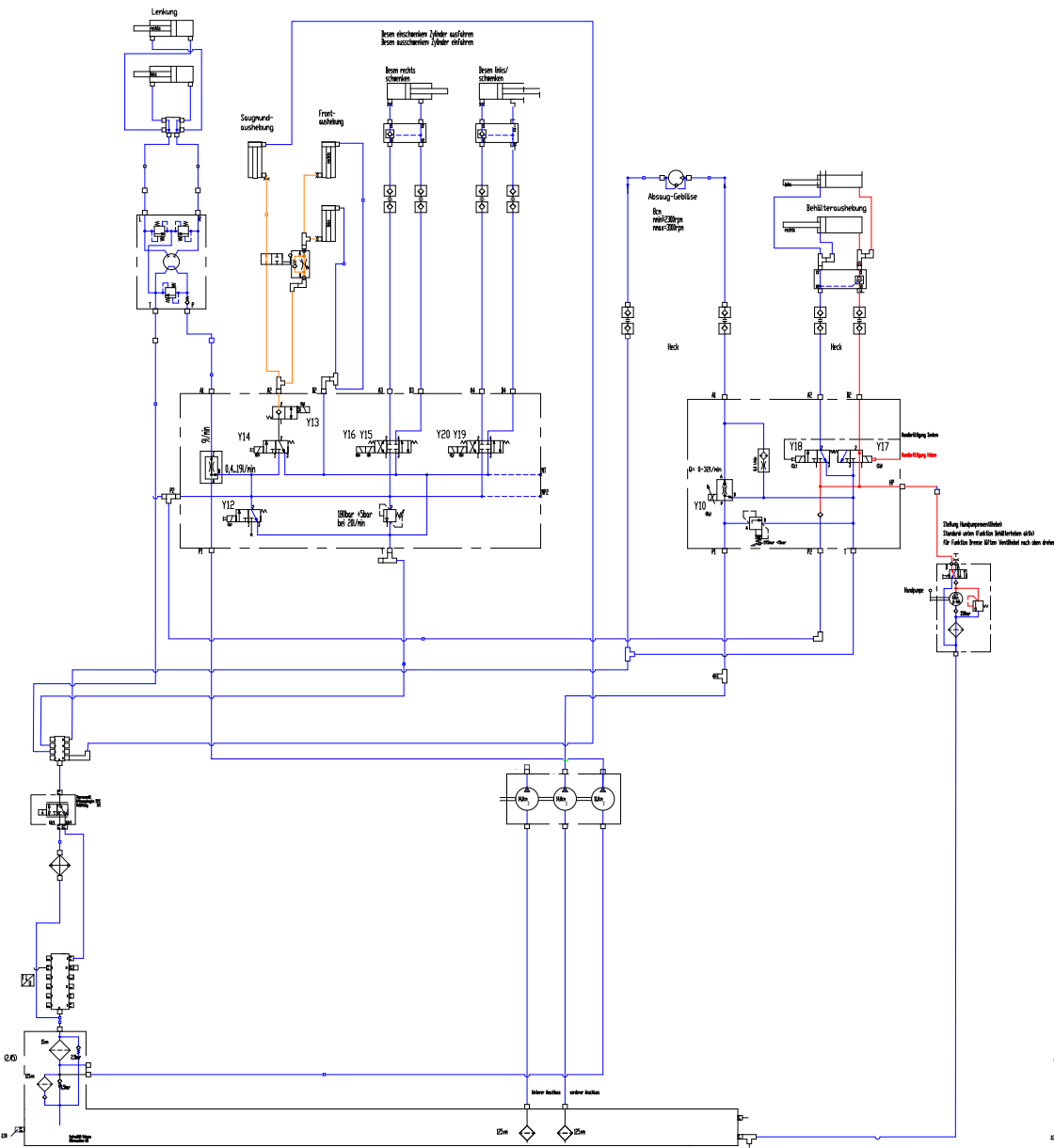
7.Function: Lower Hopper; Y12 and Y18 powered- on



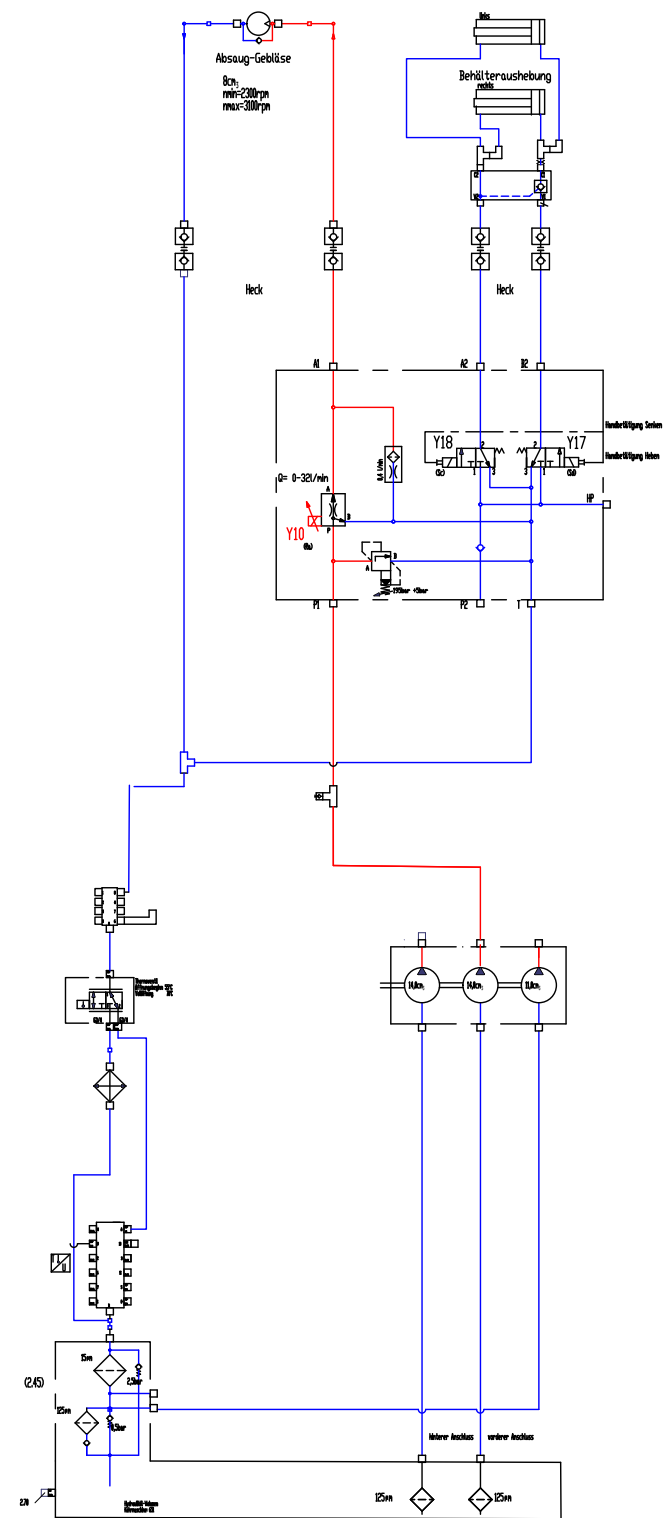
Hy.- Functional diagrams Workhydraulic CM 1650

8.Function:
Raise Hopper with hand pump; Y17 powered- on aktivated by Hand

9.Function:
Raise Hopper with hand pump; Y18 powered- on aktivated by Hand

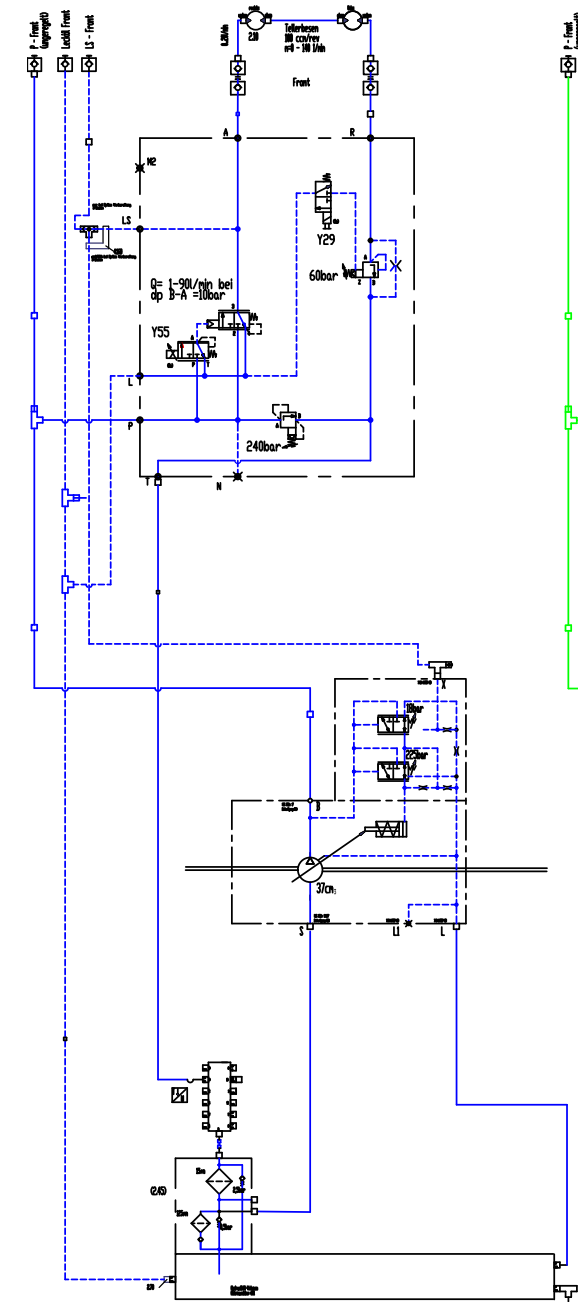


10.Function: Suction Fan on;
Y10 powered- on

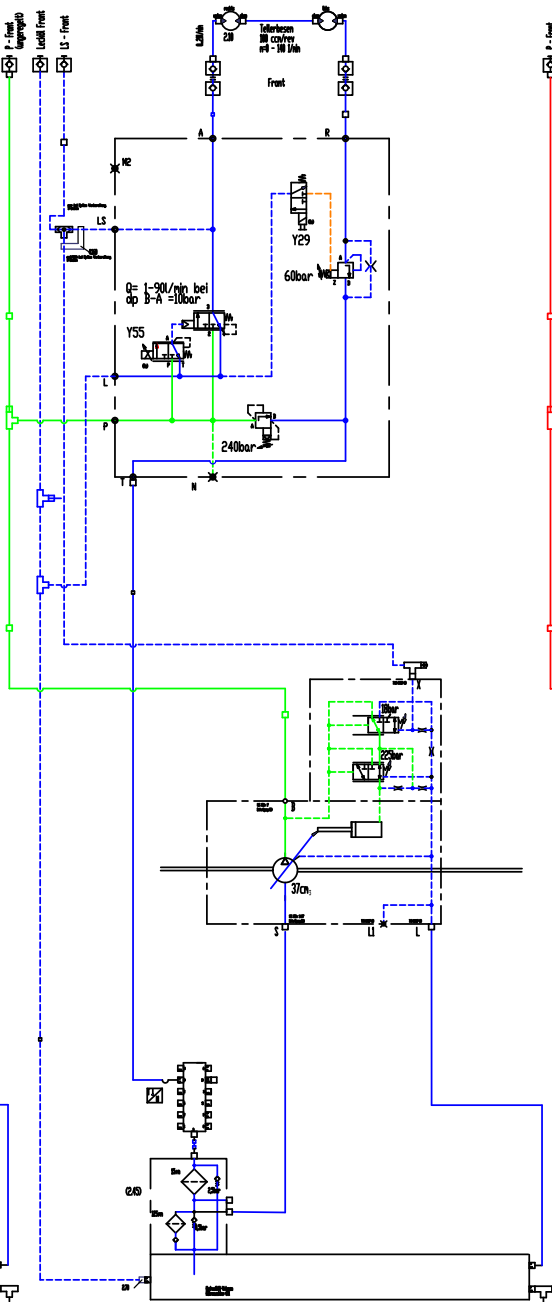


Hy.- Functional diagrams Workhydraulic CM 1650

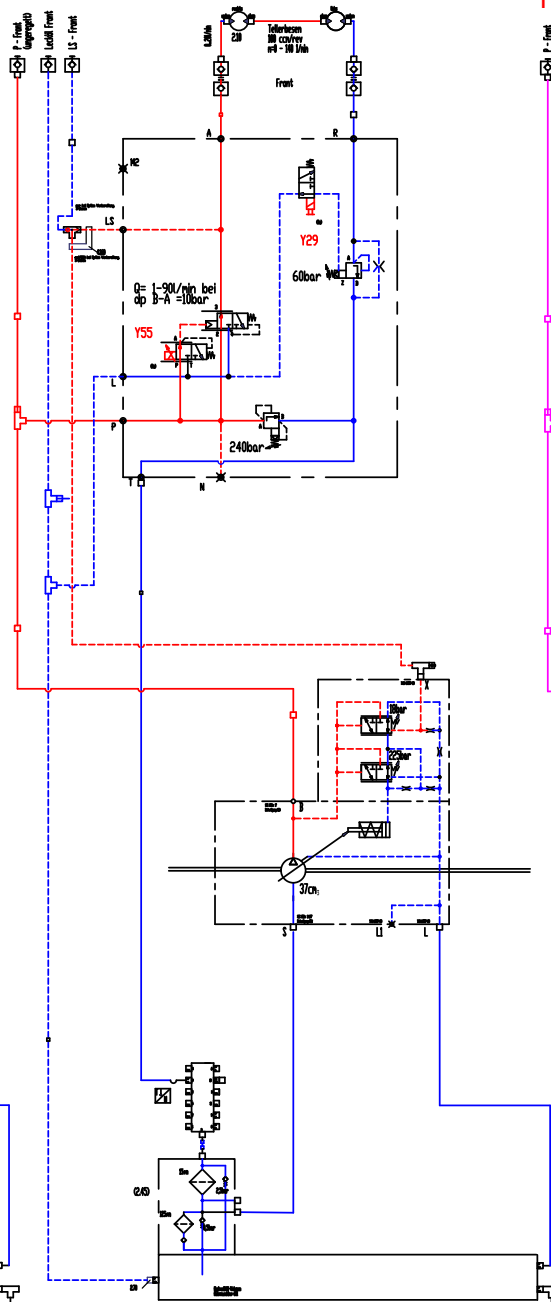
11. Function:
Drive for front attachment with engine off



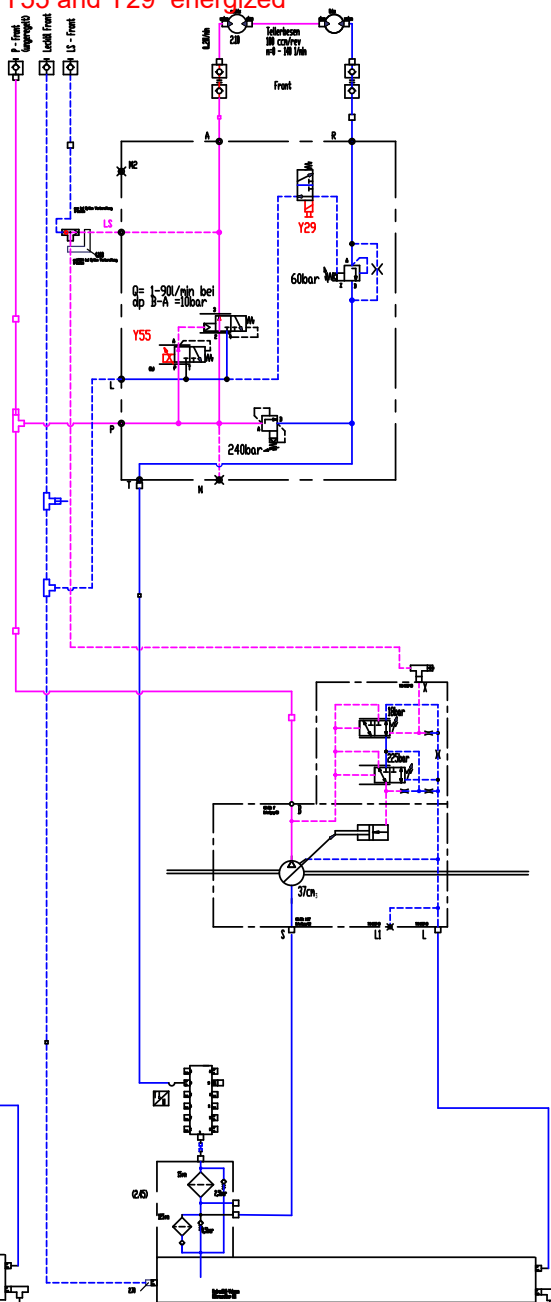
12. Function:
Drive for front attachment in circulation;
Y55 and Y29 not energized



13. Function:
Drive for front attachment aktiv; Y55
und Y29 energized

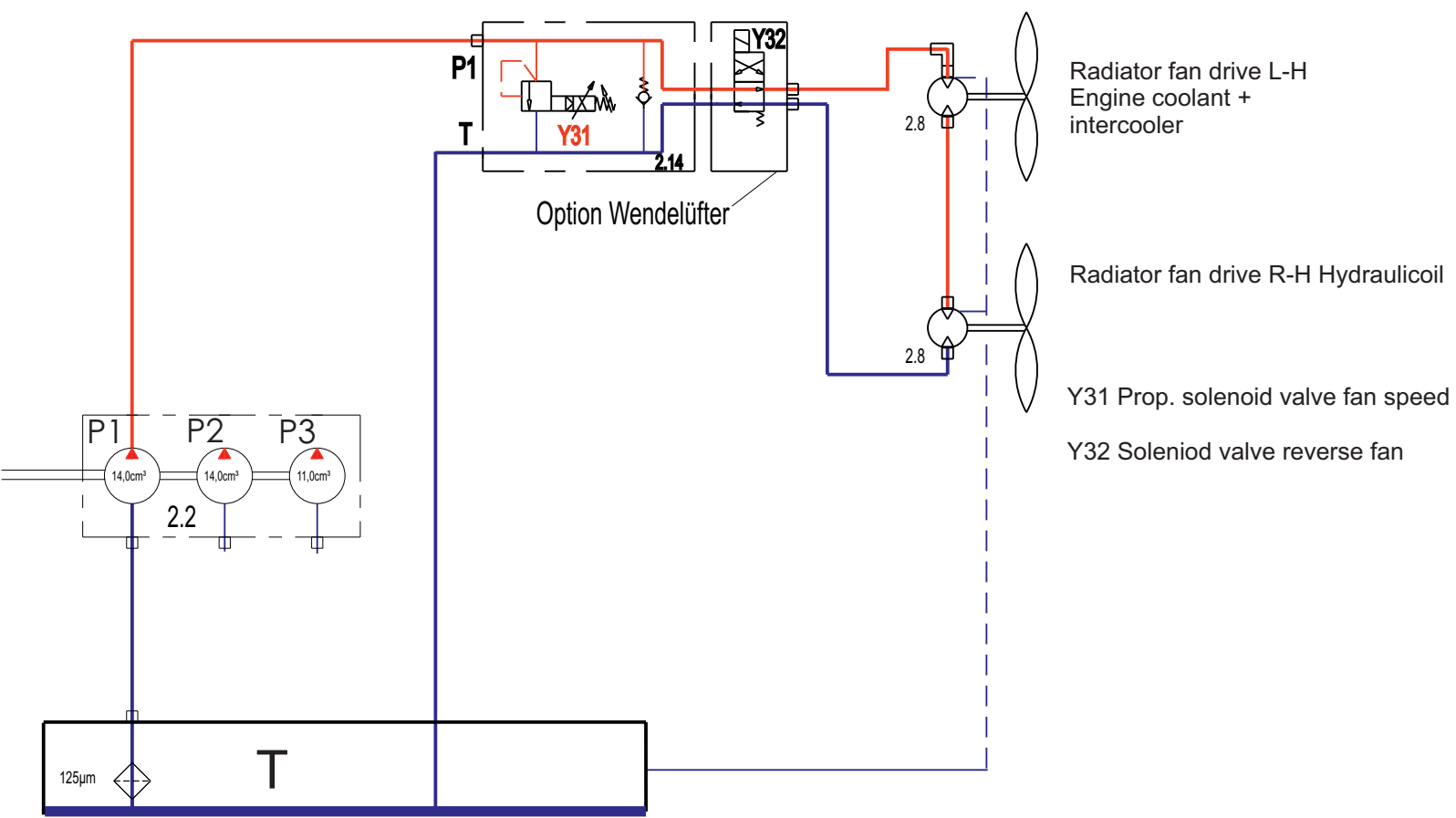


14. Function:
Drive for front attachment in pressure cut-
off, pressure over 225bar;
Y55 and Y29 energized



Hy.- Functional diagrams Workhydraulic CM 1650

15. Function: Fan drive (engine coolant+ hydraulicoil) on
Y31 powered- on



Hy.- Functional diagrams Workhydraulic CM 1650

16.Function: Reversible fan on
Y31+ Y32 powered- on

